

DISTINCTIVE  
AFRICA



EXPLORE SOUTHERN  
**TANZANIA**



**Day 01 LONDON**

Depart London Heathrow flying with Emirates.



EK0006 Economy Dep: London Heathrow 22:15 Arr: Dubai 08:05 (+1 day)



**Day 02 DUBAI – DAR ES SALAAM – SELOUS**

Arrive into Dubai and meet an onward flight.



EK0725 Economy Dep: Dubai 10:05 Arr: Dar Es Salaam 14:30

Arrive into Dar Es Salaam International Airport. Clear customs and immigration formalities.

**Visas:**

All British passport holders need a tourist or business visa to enter Tanzania. You should get one from the Tanzanian High Commission before you travel or it is possible to get a tourist or business visa for a single entry on arrival at main ports of entry to Tanzania.

Transfer on arrival to the domestic airport to meet an onward flight with Coastal Aviation.



Coastal Economy Dep: Dar Es Salaam *TBA* Arr: Selous *TBA*

**Coastal Aviation:**

Baggage is strictly limited to 15kg per person (including hand luggage) in soft-sided bags. XL class seats can be purchased at **£125.00** per person and increase the luggage allowance to 32kg per person.

On arrival, meet a shared transfer by camp vehicle to your camp.

**Lake Manze Camp**

**1 x Safari Meru Tent with Full Board & Shared Activities for 3-nights**

**Full Board Basis:**

Your stay includes accommodation, full board (3 meals daily), airstrip transfers and shared activities. Activities include two half day game drives (one of these can be a boat trip) or one full day game viewing with picnic lunch per day.

Hidden beneath a shaded canopy of tall doum palms, in one of the Selous richest areas for wildlife, Lake Manze Tented Camp is magnificently located on the shores of the lake from which it takes its name. The camp maintains a simple, natural feel of the safari camps of days gone by. Manze also offers a variety of exciting wilderness activities, including game drives, walking safaris, boat safaris and fishing. The communal area is simply a large thatched roof spreading above a sand floor, with armchairs and sofas for lounging with a drink to watch the animals come and go.

The 12 **Safari Meru Tents** are equipped with a twin or double beds, flush toilet, outdoor shower and private veranda and are perfectly situated to enjoy the morning ritual of elephants trampling across an old, well-worn elephant trail in front of the camp towards the river.





**Days 03 - 04 SELOUS**

Shared guided activities from your safari camp.



The huge Selous Game Reserve covers 5% of Tanzania's land area and is one of the most remote reserves in Africa. Uninhabited except for its lodges, this conservation area is not subject to national park restrictions and therefore allows excellent opportunities for walking safaris, boat safaris and fly-camping. Attracting both migratory and resident Eastern and Southern African wildlife, accommodation is in high quality, low impact lodges. The mighty Rufiji River is home to an abundance of aquatic life and birds. Along its shores, hippo and crocodile are frequently seen. Away from the river, the surprisingly colourful and green landscape is home to large numbers of elephant, giraffe, lion, leopard and even wild dog.





**Day 05 SELOUS – ZANZIBAR**

Shared morning activity from your camp. Meet a shared transfer by camp vehicle to the airstrip to meet an onward flight with Coastal Aviation. Picnic lunch included.



Coastal Economy Dep: Selous *TBA* Arr: Zanzibar *TBA*

**Coastal Aviation Flight:**

This flight may have stops en-route.

Private transfer on arrival to your hotel.

**Zanzibar Bed Night Tax:**

US\$1.00 per person per night 'Infrastructure Tax' collected from the guests directly by the hotel on arrival.

**Fumba Beach Lodge**

1 x Garden View Room on a Half Board basis for 6-nights

Situated on one of Zanzibar’s most beautiful and secluded beaches, Fumba Beach Lodge is a luxurious and peaceful hideaway, offering a perfect blend of casual elegance and a friendly, first class service. A total of 26 whitewashed Zanzibari style bungalows with their own verandas are scattered along the beach ensuring private views of the Indian Ocean. Just 30-minutes southwest of Zanzibar’s historic capital Stone Town, the lodge is concealed well away from the busy tourist areas on a peninsula with no other hotels in the area. Three naturally formed coves protect the beaches around the lodge and provide seclusion and tranquillity for all guests. In the open-air restaurant you can enjoy the exquisitely prepared fresh seafood along with a tantalizing array of international and local dishes. For day time excitement you can choose scuba diving, snorkeling, swimming, a sunset cruise, Stone Town tour and lots more. Or just relax at the swimming pool or on the beach under the branches of the baobab and do nothing.

The **Garden View Rooms** are large, light rooms and all have an en-suite bathroom, fans, king size beds and a private veranda.



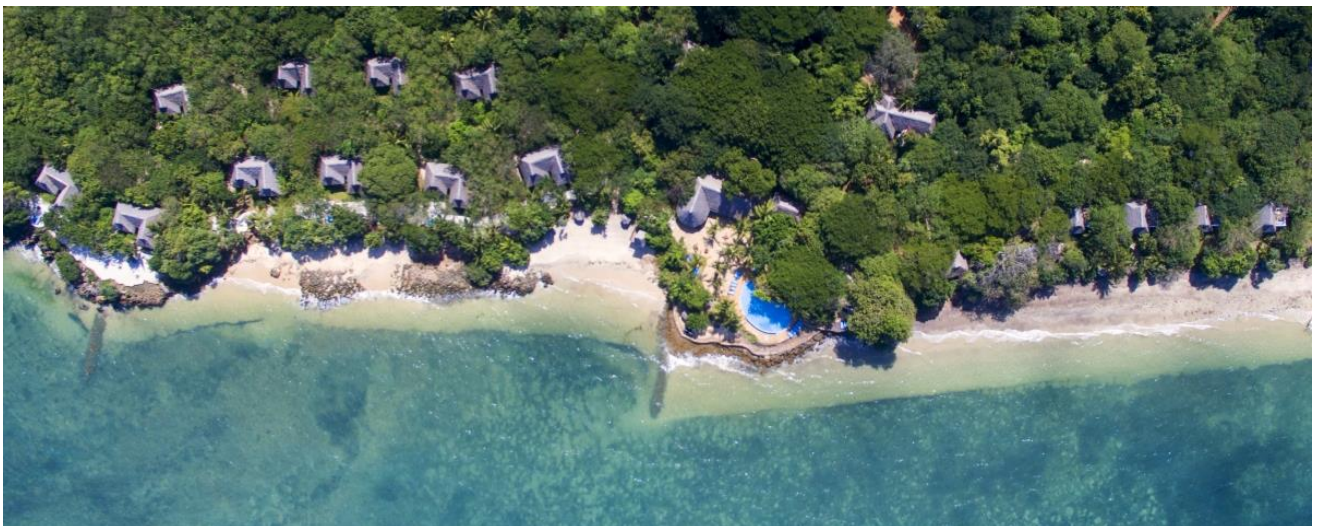


**Days 06 - 10 ZANZIBAR**

Days at leisure. Optional tours and activities can be arranged locally.



At 80km long and 30km wide, Zanzibar is the largest island in the archipelago. With exquisite beaches and fascinating culture, Zanzibar has a long trading history with the Arab world. It was a separate state until 1964 and has a unique culture all of its own. Known as the 'Spice Island', you will still find cinnamon, turmeric, chillies, nutmeg and cloves growing wild. Lapping the pristine white sandy beaches are the turquoise coral waters of the Indian Ocean, which are great for snorkelling and diving. In the interior, the Jozani Forest Reserve has a maze of nature trails where birds, antelope and even the rare Red Colobus Monkey roam freely.





**Day 11 ZANZIBAR**

Private transfer to the airport to meet return flights with flydubai and then Emirates.

**Airport Tax:**

US\$1.00 per person departure tax is payable directly at the airport for all passengers departing Zanzibar.



EK2191 Economy Dep: Zanzibar 21:30 Arr: Dubai 04:25 (+1 day)



**Day 12 DUBAI - LONDON**



EK0001 Economy Dep: Dubai 07:45 Arr: London Heathrow 12:25

Arrive back into London Heathrow via Dubai.

# HOLIDAY COST

## From **£3,395.00** per person

A deposit of around 20% is usually required to secure a booking

### **Includes**

- Flights as listed.
- All pre-payable airport departure taxes.
- Accommodation as listed.
- Transfers and transport as listed (on a shared basis unless specified as private).
- Meals as listed.
- Excursions as listed (on a shared basis unless specified as private).
- Government taxes and park fees.

### **Excludes**

- Local departure taxes, park fee increases and VAT increases where applicable.
- Tips and gratuities.
- Any future currency surcharges.
- Any future airline fare, tax or fuel surcharges.\*

*\*In the event of airfare /tax increases you will have the option to pay for your airfare in advance to avoid these increases.*

### **Please Note**

- All flights, accommodation and services are subject to availability at the time of booking.
- Air fares, taxes, schedules and routings are subject to change until ticket issue.

### **Booking Conditions**

- A deposit of around 20% is usually required to secure a booking.
- The final balance would be due 10 weeks prior to departure.
- You can review our full booking conditions at: [www.distinctiveafrica.co.uk](http://www.distinctiveafrica.co.uk).

### **Passenger Information**

- Please provide full passport details on confirmation of booking.
- It may be a requirement that you have a valid Yellow Fever certificate to enter into Tanzania.

### **Financial & Consumer Protection**

- When you book with Distinctive World Travel you are safe in the knowledge that we are fully bonded with the Civil Aviation Authority and hold an Air Tour Operators Licence (ATOL 9027).  
[www.caa.co.uk/ATOL 9027](http://www.caa.co.uk/ATOL%209027)
- We are a member of AITO (Association of Independent Tour Operators) which represents the UK's 140 top specialist tour operators and prides itself on providing the highest level of customer satisfaction by concentrating on: Choice, Quality and Service.  
[www.aito.co.uk](http://www.aito.co.uk)